

PLANC™

Large stone planks

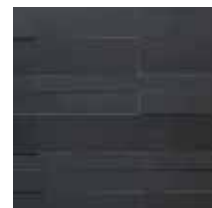
STRETCHED TO THE LIMIT BUT NOT LIMITED BY SIZE

Norstone's new PLANC range is large format stone planks in varying sizes to cover expansive wall areas of residential and commercial buildings.

PLANC stone tiles can be made to order according to a designer's preference and finish, as we work closely with you to provide the added facility of creating genuinely bespoke items from conceptual ideas.



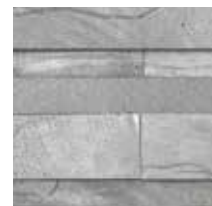
Colours



Ebony Basalt



Grey Basalt



Lavastone



Silver Grey Quartz

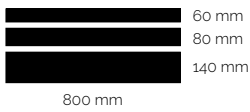


Travertine

The sublime lines of each range brings a new and exciting element to indoor and outdoor design.

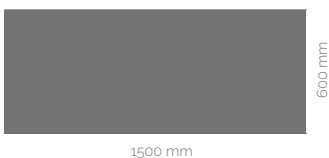
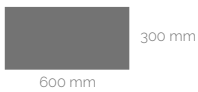
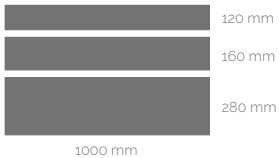
Stock Size

Available sizes stocked are sold as a 3 piece set as loose stone in a crate.



By Special Order

Any size can be ordered with a MOQ allowing 12 - 30 week lead time for manufacturing and shipping.



Unit Dimensions

Stone Planks: 60,80,140 mm x 800 mm

Thickness: 20 mm

Weight

58 kg/m²

Coverage

4.5 sets/m²